

A large, warm-toned portrait of Lera Lynn with long, wavy brown hair and bangs, looking directly at the camera with a soft expression.

# LERA LYNN

## SOMETHING MORE THAN LOVE

### NEW ALBUM OUT 7/15

A close-up, artistic photograph of Lera Lynn's face, partially obscured by a dark, textured fabric or bandage, with a soft, ethereal lighting.

LERA LYNN  
SOMETHING MORE THAN LOVE

SOMETHING MORE THAN LOVE  
ON SOUNDCLOUD



<--ON TOUR NOW-->

SEE SCHEDULE

#### SINGLES RELEASING

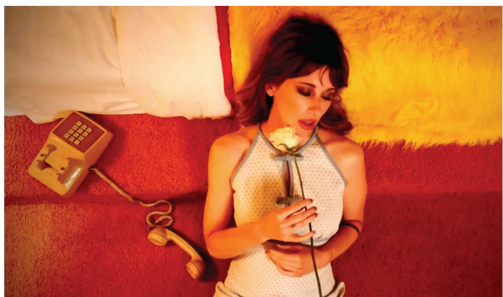
"ILLUSION" 4.20

"SOMETHING MORE THAN LOVE" 5.13

"I'M YOUR KAMIKAZE" 6.10

"WHAT IS THIS BODY?" 7.1

WATCH "ILLUSION" MUSIC VIDEO



Lera Lynn has spent a decade blurring the boundaries between genres, carving out a sound inspired by art-pop, indie-folk, and the outer edges of American roots music. She's a singer/songwriter. A road warrior. A multi-instrumentalist and producer capable not only of collaborating with her heroes, as she did on 2018's *Plays Well With Others*, but also of forging an entire album without outside help, as she did on 2020's *On My Own*.

Nothing, though, could have prepared Lynn for the lessons learned during motherhood. She welcomed her first son during the early months of the pandemic, ushering in a new era of shifting priorities, strange endings, and new beginnings. Inside, she was battling postpartum depression. Outside, a bigger picture began taking shape: a feeling of interconnectedness, of cyclic renewal, of the knowledge that every beginning is an end and every end is a beginning. Those realizations coalesced into *Something More Than Love*, a record filled with synthesizers, lush soundscapes, the pop-noire punch of Lynn's voice, and the most dynamic melodies of her career. Co-created with her partner, Todd Lombardo, *Something More Than Love* turns Lynn's experience with absolute surrender — surrendering oneself to the trials and triumphs of motherhood — into a universal record about the experiences that bind us together. It's the story of a life cycle that repeats, every termination point becoming a starting line, every edge giving way to the circular slope of the ouroboros.



**BOOKING:** frank@highroadtouring.com // **MGMT:** jw@globalpositioningservices.net // **PUBLICITY:** asha.goodman@sacksco.com